

The Journal of Borderland Research

TABLE OF CONTENTS

THE COSMIC PURPOSE OF FREEMASONRY AND CATHOLICISM, By Max Heindel.	1 - 7
THE POSSIBILITY OF LUNAR HABITATION By Tom Brown.	8 - 11
THEY LIVE IN THE SKY, PART IV By Trevor James Constable	12 - 15
THE WORLD POWER GRID SYSTEM, PART V By Riley Hansard Crabb.	16 - 20
CLIPS, QUOTES & COMMENTS	
Lucifer Vs Jehovah According To Blavatsky, They Did Not Marry and They Did Burn!, Power Without Responsibility, "Liquidated By Our Own People", At Last A Portrait Of The False Christ Looeamong, 1500 Earthquakes In Two Months, Women's Lib In Jordan, That Cash-Landrum UFO Case Again, Schizophrenia And ELF Waves, Home Defense Against The Rus- sian Woodpecker, Speaking Of The U.S. Psycho- tronic Association, Our Statistical Approach To Psychism, Not Visions But Remote Viewing, Radionic Instrument A "Multispectral Image Analyzer", Acknowledgement Of Russia's Lead In Psychic Research, Tantric Buddhism VS The United States Navy, A Good Example Of Russian Mind Control, Using Mind Control To "Remote View" The Future, The New Bible Oahspe On Re- mote Viewing, The Organized And Rhythmic Hea- vens, Localizing The Grid Line Crossing Points, Cathie Believes We Have Manned Bases On The Moon, Power Without Responsibility Again By The Air Force, Radionic Field Resonance For Cancer Therapy, Comes The Dawn On LTCOL Wen- dell Stevens, World View 1984	21 - 36

THE JOURNAL OF BORDERLAND RESEARCH

BSRF No. 1 Published by Borderland Sciences Research Foundation,
PO Box 549, Vista, California 92083-0190. Edited by
the Director, Riley Hansard Crabb, MsD.

The Journal is published six issues a year with the assistance of the Associates, at the Director's home, 1103 Bobolink Drive, Vista. It is printed, 36 pages an issue. The Foundation is incorporated under California law, May 21, 1951, #254263, and has been in continuous existence since then. Correspondence is addressed to the PO Box. The Journal is included in the Foundation membership of \$15.00 a year, domestic. Foreign membership/subscriptions are now \$15.00. Single copies and back issues of the Journal are \$2.50. A donation of \$15 domestic or \$15 foreign will also bring the Journal to those who dont care to join BSRF. The Director's wife, Mrs. Judith Crabb, is office manager and Secretary-Treasurer.

PURPOSES OF BSRF: This is a non-profit organization of people who take an active interest in unusual happenings along the borderland between the visible and invisible worlds. In the words of the late Meade Layne, founder and director of BSRF from 1946 to 1959: "BSRA publications are scientific in approach but employ few technical expressions. They deal with significant phenomena which orthodox science cannot or will not investigate. For example: The Fortean falls of objects from the sky. Teleportation, Radiesthesia, PK Effects, Underground Races, Mysterious Disappearances, Occult and Psychic Phenomena, Photography of the Invisible, Nature of the Ethers and the problem of the Aeroforms (Flying Saucers). In 1946 BSRA obtained an interpretation of the phemomena which has come to be known as the Etheric or 4-D interpretation; it has not been radically altered since that time. This continues to be the only explanation of the UFOs which makes good science, sound metaphysics and common sense."

The chief present concern of the Foundation is to make this kind of unusual information available as a public service at resonable cost. Headquarters acts as a receiving, coordinating and distributing center. An important part of the Director's work is to give recognition, understanding and encouragement to people who are having unusual experiences of the borderland type and/or are conducting research in any of the above fields. For consultation on borderland problems or for Spiritual healing through prayer, write or phone 619-724-2043 for help or for an appointment. Donations and bequests toward Foundation research programs and expenses are welcome.

The 37-page list of BSRF publications is available from Headquarters for \$2.50 in money, check or stamps. This includes brochures on borderland subjects, tape recordings of Crabb's lectures and of members of the Inner Circle, talking through trance-medium Mark Probert. Write to BSRF, PO Box 549, Vista, California 92083 USA.

THE COSMIC PURPOSE OF TWO GREAT ORGANIZATIONS
FREEMASONRY AND CATHOLICISM

By Max Heindel

The Rosicrucian Fellowship aims to educate and construct, to be charitable even to those from whom we differ, and never to vent the venom of vituperation, spite or malice even upon those who seem deliberately determined to mislead. We revere the Catholic religion. It is as divine in its essence as Mystic Masonry -- both are rooted in hoary antiquity, both were born to further the aspiration of the striving soul, and both have a message and a mission in the world not apparent upon the surface today, because man-made ceremonial as a scale has hidden the kernel of divinity in each.

It is the object of the present articles to remove that scale and show the Cosmic purpose of these two great Organizations, which are so bitterly antagonistic to each other. We do not aim to reconcile them, however; for though they are both designed to further the emancipation of the soul, their methods are different; and the attributes of the soul fostered by one method will indeed be very different from the quality of the soul nurtured in the other School. Therefore the strife must continue until the battle for the souls of men has been lost and won.

The issue is not, however, the persistence of the Masonic or Catholic institutions; but the outcome will determine the nature of the training humanity will receive in the remaining Periods of our evolution.. We shall endeavor to show the cosmic root of both of these institutions, the purpose of each and the training which each will inaugurate if successful, also the nature of the soul quality which may be expected to result from each method.

The writer is not a Mason, and thus he is free to say what he knows without fear of violating obligations, but he is a Mason at heart and therefore frankly opposed to Catholicism.

Our opposition is not fanatical, or blind to the merits of the Catholic Religion, however. The Catholic is our brother as well as the Mason; we would not say a disparaging irreverent word against the faith, or those who live by it; and should we seem to do so, in any passage, the wrong will be due to inadvertence. The reader is requested to note that we distinguish sharply between the Catholic Religion and the Catholic Hierarchy; but the latter are our

brothers; we would not throw stones either physically or morally; for we know our own shortcomings too well to attack others. Thus our opposition is not personal but spiritual, and to be fought with the weapon of the Spirit -- Reason.

COME, LET US REASON TOGETHER

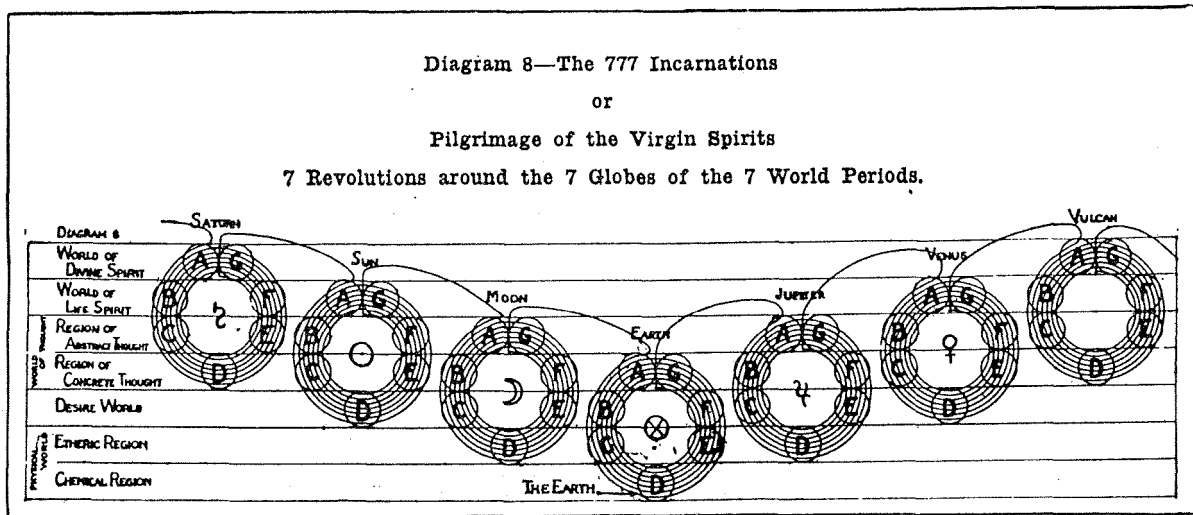
We firmly believe it to be for the everlasting good of mankind that the Masons should win, and cannot therefore be sure to present the Catholic side in a perfectly unbiased manner, but we ask our students for whom this is written, to believe that we shall try to be just. Of the Cosmic Facts we are certain, but bias may creep into our conclusions; therefore each must use his reason to test what we have to say, viz, "prove all things and hold fast to that which is good".

The great law of analogy is everywhere the master key of all spiritual mysteries and, although Masonry and Catholicism do not begin till we arrive at the Earth Period, they have their prototype in the earlier Periods; we shall therefore touch briefly upon the essential facts.

In the Saturn period the Earth-in-the-making was dark. Heat, which is the first manifestation of the ever invisible fire, was the only element then manifest; embryonic mankind was mineral-like, the only lower kingdom of evolving life. Unity was everywhere observable, and the Lords of Mind who were human then were at one among themselves.

In the Western Wisdom Teaching we speak of the highest Initiate of the Saturn Period as The Father.

In the Sun Period the root of a new element, Air, was evolved and coalesced with the true fire which, mark again, is always invisible and which manifested as heat in the Saturn Period. Then fire burst into flames and the dark world became a blazing ball of luminous firemist at the word of power, "Let there be Light!"



Let the student ponder well the relation of fire and flame the former lies sleeping, invisible in everything, and is kindled light in various ways: by a blow of a hammer upon a stone, by friction of wood against wood and by chemical action, etc. This gives us a clue to the identity and state of The Father, "whom no man hath seen at any time", but who is revealed in "The Light of the World", the Son. He is the highest initiate of the Sun period.

As the unseen fire is revealed in the flame, so also the fullness of the Father dwelt in the Son, and they are one as fire is one with the flame in which it manifests. This is the root of all true Sun or Fire worship. All look beyond the physical symbol and adore "Our Father Who art in Heaven". The Mystic Masons of today hold this faith in fire as firmly as ever.

BEFORE DIVERSITY THERE WAS UNITY

Thus it will be seen that the Unity which prevailed in the Saturn Period continued in the Sun Period. The ordinary humanity of that time has now evolved to the glory of Archangels; some were more advanced than others, but there was no antagonism among them. Our present humanity had advanced to a plantlike stage, and was slightly above the new Lifewave started in the Sun Period, and unity also prevailed.

In the Moon Period contact of the heated sphere with cold Space generated moisture, and the battle of the elements commenced in all its fierceness. The heated ball of fire endeavored to evaporate the moisture, force it outwards and created a vacuum wherein to maintain its integrity and burn undisturbed; but there is and can be no void in nature, hence the outrushing steam condensed at a certain distance from the heated ball and was again driven inwards by the cold of Space, to be again evaporated and propelled outwards, in a ceaseless round for ages and ages, as a shuttlecock between the separate Hierarchies of Spirits composing the various Kingdoms of Life, represented in the Fire-Sphere and Cosmic Space which is an expression of the Homogeneous Absolute Spirit.

The Fire Spirits are actively striving to attain enlargement of consciousness. But the Absolute rests ever clothed in the invisible garment of Cosmic Space. In "It" all powers and possibilities are latent, and It seeks to discourage and check any attempt at expenditure of latent power as dynamic energy required in the evolution of a solar system. Water is the agent It used to quench the fire of active spirits. The zone between the heated center of the separate Spirit Sphere, and the Point where its individual atmosphere meets Cosmic Space, is a battleground of evolving spirits at various stages of evolution.

The present Angels were human in the Moon Period, and the highest Initiate is the Holy Spirit (Jehovah).

As our humanity and the other Kingdoms of life on earth are variously affected by the present elements, so that some like heat,

others prefer cold, some thrive on moisture and others require dryness, so also in the Moon period among the Angels, some had affinity for water, others abhorred it and loved fire.

The continued cycles of condensation and evaporation of the moisture surrounding the fiery center eventually caused incrustation, and it was the purpose of Jehovah to mold this "red Earth", translated Adam, into forms wherein to imprison and quench the spirits in the fire. To this end He issued the creative fiat, and the prototypes of fish, fowl and every living thing appeared, even including the primitive human form, which were all created by His Angels; thus He hoped to make all living things subservient to His will.

FREEDOM OF CHOICE IN HEAVEN

Against this plan a minority of the Angels rebelled. They had too great an affinity for fire to bear contact with water and refused to create the forms as ordered; but thereby they at the same time deprived themselves of an opportunity of evolution along the conventional lines and became an anomaly in nature; furthermore, having repudiated the authority of Jehovah, they must work out their own salvation in their own manner. How this has been accomplished by Lucifer their Great Leader will be made plain in the following articles; for the present suffice it to say that, in the Earth Period, when various planets were differentiated to provide proper evolutionary environment for each class of Spirits, the Angels under Jehovah were set to work with the inhabitants of all planets having Moons; while the Lucifer spirits have their abode upon the planet Mars.

The Angel Gabriel is representative on earth of the Lunar Hierarchy, presided over by Jehovah. The Angel Samael is ambassador of the Martial forces Lucifer. Gabriel -- who announced the coming birth of Jesus to Mary -- and his lunar angels are therefore the givers of physical life, while Samael and the hosts of Mars are the Angels of Death.

Thus originated the feud in the dim dawn of this Cosmic Day, and that which we see as Free Masonry today is an attempt by the Hierarchs of Fire, the Lucifer spirits, to bring us the imprisoned spirit Light, that by it we may see and know. Catholicism is an activity of the Hierarchs of Water, and places Holy Water at the Temple door to quench the spirits seeking light and knowledge and to inculcate faith in Jehovah.

As the vernal equinox is said to be at the first point of Aries, no matter where in the constellations it falls by precession, so the point where the human seed-atom comes from the invisible world and is taken in hand by the Lunar God of Generation, Jehovah, through His ambassador, the Angel Gabriel, is esoterically the first point of Cancer. This is the Cardinal sign of the watery Triplicity, and is ruled by the Moon. There Conception takes place; but were the form built of water and its concretions alone, it could never come to birth; so four months later when the foetus has reached the stage of development corresponding to the second sign of the watery tri-

plicity, Scorpio, the eighth sign, which corresponds to the house of death, Samael, the dauntless ambassador of the Lucifer spirits, invades the watery domain of the Lunar Hierarchy and introduces the fiery spark of the spirit into the inert form, to leaven, quicken and mould it into an expression of itself.

DIE TO SPIRIT TO LIVE IN THE FLESH

There the Silver Cord which has grown from the seed-atom of the dense body (located in the heart) since conception, is welded to the part that has sprouted from the central vortex of the desire body (located in the liver) and when the Silver Cord is tied by the seed-atom of the vital body (located in the solar plexus) the spirit dies to life in the super-sensible world and quickens the body it is to use in its coming earth life.

This life on earth lasts until the course of events foreshadowed in the wheel of life, the horoscope, has been run; and when the spirit again reaches the realm of Samael, the Angel of Death, the mystic eighth house, the silver cord is loosed. The spirit then returns to God who gave it, until the dawn of another life-day in the School of earth beckons it to a new birth that it may acquire more skill in the arts and crafts of temple-building.

About five months after the quickening, when the last of the watery signs, Pisces, has been passed, the representative of the Lucifer Spirits, Samael, focuses the forces of the fiery sign Aries, where Mars is positively polarized, so that under the impulse of their dynamic energy the waters of the womb are voided and the imprisoned spirit liberated into the physical world, to fight the battle of life. It may blindly butt its head against the Cosmic forces typified by the first of the fiery signs, Aries the Ram, which is a symbol of the brute strength brought to bear upon the problems of life by the most primitive races; or it may adopt the more modern method of cunning, as a means of attaining mastery over others, which characteristic is indicated in the second of the fiery signs, Leo the Lion, king beasts; or perchance it may rise above the animal nature and aim at the stars with the bow of spiritual aspiration, typified by the last of the fiery signs, Sagittarius the Centaur.

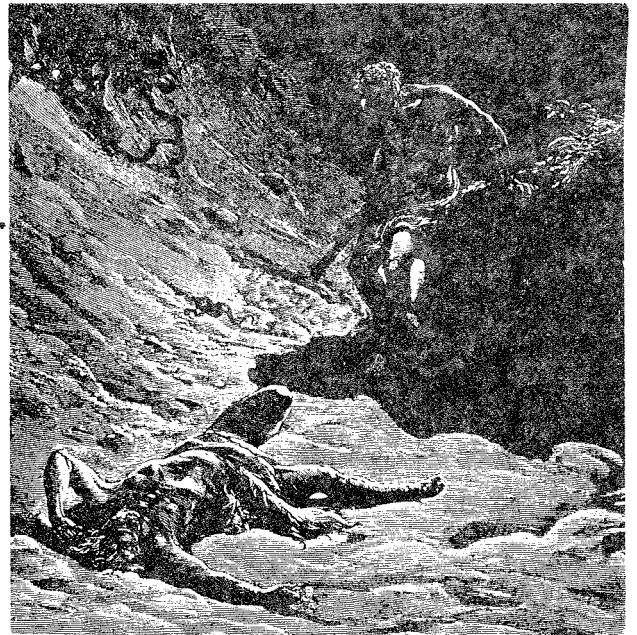
The Centaur is just ahead of the watery sign Scorpio, a warning that one who tries to reach that last stage and assert his divine right of choice and prerogative as "Phree Messen", a son of Fire and Light, will surely feel the sting of the Scorpion in his heel, which will goad him onward upon the path where men become "wise as serpents". It is from this class that Mystic Masonry is recruited with men who have the indomitable courage to dare, the unflagging energy to do and the diplomatic discrimination to be silent. . .

The Masonic Legend has points of variance from as well as agreement with the Bible story. It states that Jehovah created Eve, that the Lucifer spirit Samael united with her but that he was ousted by Jehovah and forced to leave her before the birth of her son Cain, who was thus the son of a widow. Then Jehovah created Adam to be the

husband of Eve, and from their union Abel was born. Thus from the beginning there have been two kinds of people in the world. One, begotten by the Lucifer Spirit Samael and partaking of a semi-divine nature imbued with the dynamic martial energy inherited from this divine ancestry, is aggressive, progressive and possessed of great initiative, but impatient of restraint or authority whether human or divine.

This class is loath to take things on faith and prone to prove all things by the light of reason. These people believe in works rather than faith, and by their dauntless courage and inexhaustible energy they have transformed the trackless wilderness of the world to a garden full of life and beauty, so lovely in fact that the Sons of Cain have forgotten the garden of God, the Kingdom of Heaven, whence they were expelled by the decree of the lunar God Jehovah. Against Him they are in constant rebellion because he has tied them by the umbilical "cable tow".

They have lost their spiritual sight and are imprisoned in the forehead of the body where it is said Cain was marked; they must wander as prodigal sons in the comparative darkness of the material world, oblivious to their high and noble estate until they find the door of the temple and ask and receive Light. Then as "phree messen" or children of light they are instructed in methods of building a new temple without sound of hammer, and when they have learned this they may "travel in foreign countries" to learn more of the craft. In other words, when the spirit realizes that it is far from its heavenly home, a prodigal, feeding upon the unsatisfactory husks of the material world, that apart from the Father it is "poor, naked and blind", when it knocks at the door of a mystic temple like that of the Rosicrucians and asks for light, when it receives the desired instruction after due qualification by building an ethereal soul-body, a temple or house eternal in the heavens, not made with hands, and without sound of hammer, when its nakedness is clothed with that house (see Corinthians 4.5) then the neophyte receives "the word", the open sesame to the inner worlds and learns to travel in foreign parts of the invisible worlds. There he takes soul flights into heavenly regions and qualifies for higher degrees under more direct instruction from the Grand Architect of the Universe,



Cain Slays Abel, by Gustav Dore. But the descendants of Abel/Seth are cruel and ruthless, too, as in the Holy wars raging now between Catholics and Moslems in Lebanon and in the Philippines.

who fashioned both heaven and earth.

Such is the temperament of the widow's sons inherited from their divine progenitor Samael and given by him to their ancestor Cain. Their past history is a struggle with adverse conditions, their achievement is victory wrested from all opposing forces by indomitable courage and persistent effort, unchecked by temporary defeat.

THE CREATURES OF JEHOVAH

On the other hand while Cain, governed by divine ambition, toiled and tilled the soil to make two blades of grass grow where only one grew, Abel, the human progeny of human parents, felt no urge or unrest, himself a creature of Jehovah through Adam and Eve. He was perfectly contented to tend the flocks also created by God and to accept a livelihood from their divinely begotten increase without labor, or exercising initiative. This docile attitude was most pleasing to the God Jehovah, who was extremely jealous of his prerogative as Creator. Therefore He cordially accepted the offering of Abel obtained without effort or initiative, but scorned the offering of Cain because derived through his own divine creative instinct akin to that of Jehovah. Cain then slew Abel, but did not thereby exterminate the docile creatures of Jehovah; for we are told Adam knew Eve again and she bore Seth.

Seth had the same characteristics as Abel and transmitted them to his descendants who to this day continue to trust to the Lord for everything and who live by faith and not by work. By arduous and energetic application to the world's work the Sons of Cain have acquired worldly wisdom and temporal power. They have been captives of industry and masters of statecraft, while the Sons of Seth, looking to the Lord for guidance, have become the avenue for divine and spiritual wisdom. They constitute the priestcraft.

The animosity of Cain and Abel has been perpetuated from generation to generation among their respective descendants. Nor could it be otherwise, because one class as temporal rulers aim to lift mankind to physical well-being through conquest of the material world, while the Priesthood in their role as spiritual guides urge their followers to forsake the wicked world, the vale of tears, and look to God for comfort. One school aims to turn out master workmen, skilled in the use of tools wherewith they may wrest a livelihood from the earth, which was cursed by their divine adversary Jehovah. The other produces master magicians, skilled in the use of the tongue in invocation, and by the use of the tongue they gain support from the toilers here and pray themselves and their charges into heaven hereafter."

Other chapters in Max Heindel's "Freemasonry and Catholicism" are: "The Masonic Legend", "The Queen of Sheba", "Casting of the Molten Sea", "The Mystery of Melchisedec", "Spiritual Alchemy", "The Philosopher's Stone -- What It is and How It Is Made", "The Path of Initiation" and "Armageddon, the Great War and the Coming Age", published by the Rosicrucian Fellowship, Oceanside, California 92054.

The Possibility of
LUNAR HABITATION

by Tom Brown

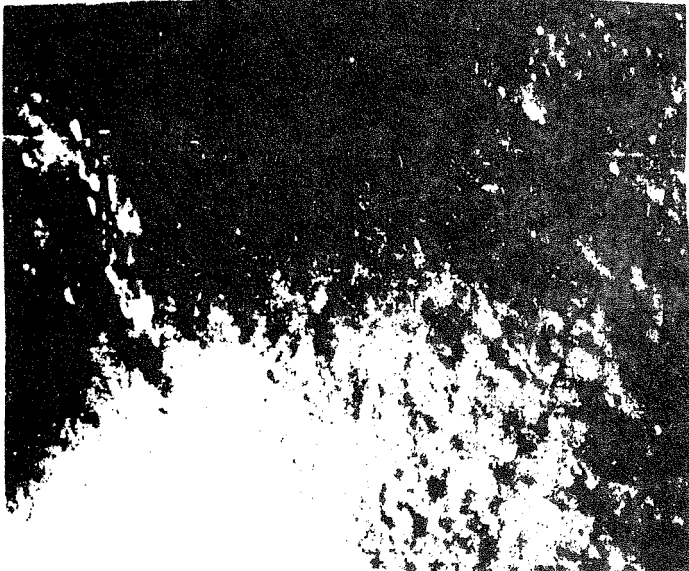
"I began with a notion of some one other world, from which objects and substances have fallen to this earth; which had, or which, to less degree, has a tutelary interest in this earth; which is now attempting to communicate with this earth—modifying, because of data which will pile up later, into acceptance that some other world is not attempting but has been, for centuries, in communication with a sect, perhaps, or a secret society, or certain esoteric ones of this earth's inhabitants." Charles Fort- The Book of the Damned

Earth's satellite, the moon, remains just as much an enigma today as it did for our ancestors who lived in the mists of prehistory. Many theories have been entered into the records through the years to attempt to explain away some of the mysteries of our neighboring sphere. Every version of our moon's origin and history seems to contain a small particle of truth enveloped in time-distorted legend or facts twisted to fit accepted theories. Only by studying all available information may one come close to deducting the reality of our celestial companion.

We have one theory that the moon and earth formed from the same dust cloud in space. Available evidence shows this to be highly unlikely as the earth has a specific gravity of 5.5 gms/cm³ while the moon has a specific gravity of 3.33 gms/cm³. Lunar rock is known to be of a different composition, and is reportedly older, than earth rock. If planets form from dust clouds then our earth and moon came from differing formative environments. This also rules out the moon being a chunk of the earth, knocked off in the past.

If the moon is not from earth's environment, then where is it from? There is a belief among many that the moon was a satellite of the planet Maldek which we now know as the asteroid belt. If this were so it would present the

possibility that the moon was moved here under intelligent guidance. It seems unlikely that the moon was trapped in earth's gravitational field by chance when one considers the complexity of its orbital and rotational cycles.



Startling signs of movement in an eerily silent world, two boulders—one of them as big as a house—have left clearly visible tracks several hundred yards long down a slope of the crater Vitello. What dislodged them? Some scientists say a relatively recent moonquake, on the theory that the moon is still a living, self-changing body like the earth.

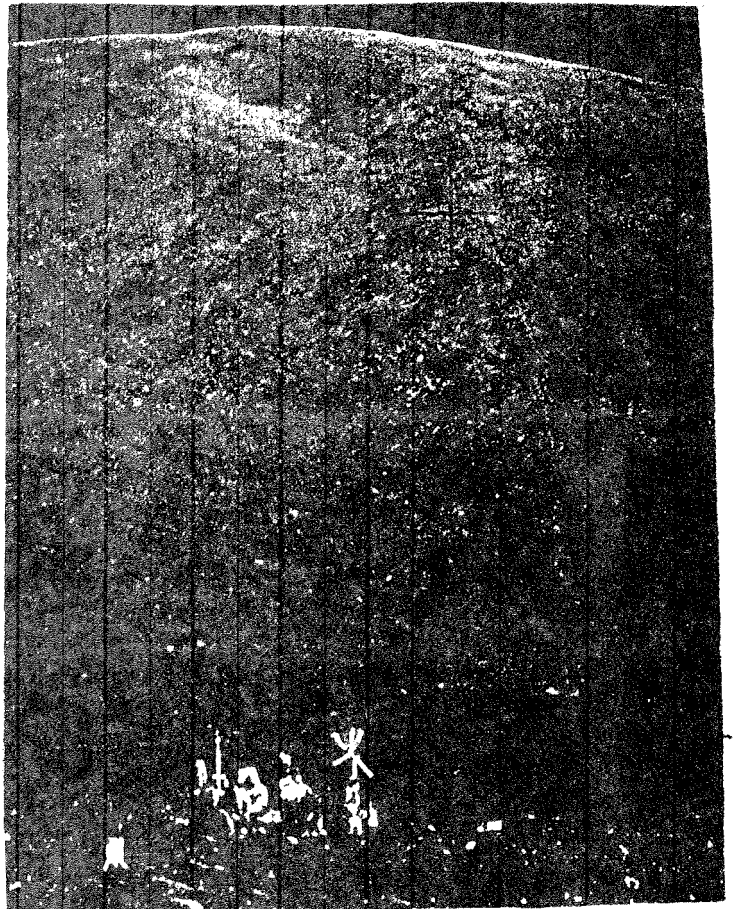
There is a theory that the moon is a creation of intelligence and may possibly be the largest UFO ever sighted. In this scenario the moon has a protective layer about three miles thick with a hardened shell underneath. The structure of the craters lends credence to this theory. An object striking a planet will make a hole as deep as it is wide. The craters are between one and a half and three miles deep regardless of diameter. It seems that the craters are not formed by meteors as we have been taught. It has been suggested that a particle beam weapon would create a surface blast that would spread across the face of a planet but only penetrate several miles. This theory allows for natural formation of the moon but enters on the fantastic possibility that it came under controlled bombardment in the far distant past.

In Hans Horbiger's Cosmic Fire and Cosmic Ice cosmology we find the belief that the earth had several moons in the past, all made of cosmic ice. These moons fell to earth periodically causing massive cataclysms such as are recorded in legends of the Flood and the destruction of Atlantis. After one moon fell the earth would capture another, and the cycles of civilisation are pegged to the flow of moons through our sky. Upon close examination one will find a mysterious connection between moon falls and polar shifts. Perhaps the polar shifts and the cycles of civilisation are controlled by someone or something on or in the moon. Richard Shaver believed that the moon had fallen out of orbit on

more than one occasion causing havoc on earth.

Three miles beyond the Rover, a boulder nearly fifty feet across had plowed a path down the North Massif (right), tracing its signature on a massive page of history. The track suggests that the rock waddled from side to side down the slope.

There have been sightings of anomalous lunar activity since the discovery of the telescope by our civilisation. We can be sure that this activity was going on long before we noticed it. The books of Charles Fort contain many scientifically recorded and officially ignored incidences of strange activity on and around our planet. There have been many sightings of lights moving about the lunar surface apparently under intelligent control. Similar sightings are recorded for Venus and Mars. In The Case for the UFO Morris Jessup presented the theory that all the phenomena recorded by Fort can be attributed to activity of inhabitants of the earth-moon system. These entities obviously have very advanced craft and may be the 'gods' of prehistory.



There have been several recent publications which contain information that is quite useful in penetrating the occult shield surrounding the truth about the moon. MOONGATE Suppressed Findings of the U.S. Space Program by William Brian II (Future Science Research Pub. Co.; POB 06392; Portland, Oregon, 97206) enters into the possibility that our moon has a heavy gravity and a breathable atmosphere at least in the lowlying seas. Bryan claims that the superpowers of the earth are quite aware of all this and that our public NASA program is just a cover for a massive space program utilizing inertialess propulsion systems such as Searle discs. MOONGATE also presents information concerning extraterrestrial interference in our space program. The book is well documented with NASA released information and cannot easily be written off.

Another recent publication which touches bases with MOONGATE on several points but presents a different aspect of the story is We Discovered ALIEN BASES ON THE MOON by Fred Steckling. (Fred Steckling; POB 1722; Vista, CA, 92083) In lieu of more truthful information Steckling goes along with the NASA story of a gravity one sixth that of earth, but claims that there is a thin atmosphere. There are several good NASA photos showing lunar clouds which support this claim. Also found are photos showing what appears to be lunar vegetation. Steckling states that it is a fact that the moon has a molten core. This is one point the two books disagree on. Bryan is a proponent of the hollow earth-hollow moon theory. Both books agree that Tsiolkowsky Crater is a large lake on the lunar backside. ALIEN BASES contains a good photo of this crater. MOONGATE draws on published information while ALIEN BASES is based on photographic evidence. Whether or not one chooses to believe any of the ideas presented in these books is up to them. Reading both of them will certainly draw one's mind toward the truth.

The best quality photos of lunar anomalies can be found in the pages of NATIONAL GEOGRAPHIC. PHOTO #1 is from the Feb. 1969 issue. (Vol. 135 No. 2) In ALIEN BASES this photo is shown with the NASA designation 'Lunar Orbiter V, photo no. 67-H-1135. A good copy of this picture will show that the 'boulders' defy gravity and roll up and down slopes next to stationary boulders. PHOTO #2 (NATIONAL GEOGRAPHIC, Sept. 1973, Vol. 144 No. 3) clearly shows another 'boulder' which not only makes the same stitch-mark trail, but also defies gravity and is stopped on the steepest part of the hill. There is another good photo of these stitch-marks crossing a crater for thirty miles, going up and down the crater wall, in ALIEN BASES. Could all these tracks be left by the same 'boulder'?



PLATE 31. (Area Blow-up) CLOSEUP OF THE CRATER KEPLER IN OCEANUS PROCELLARUM. Notice 3 domes (like large radar domes) located at the crater's rim to the right of photo. NASA Lunar Orbiter III Photo No. 67-H-201. Also notice left crater ridge which seems to have been cut or worked on. Kepler is 20 miles in diameter.

In the Feb. '69 NATIONAL GEOGRAPHIC we find an artist's depiction of a future lunar colony (pp 229-230). In this drawing we see a cutaway of the lunar surface showing an underground complex contained in spherical and cylindrical buildings. These structures appear as domes on the lunar surface. The drawing looks amazingly like the dome structures found in Crater Kepler, a picture of which is found eight pages further on (pp 238-239). PHOTO #3 (ALIEN BASES plate 31) is a blowup of the same photo. There is obviously activity in Crater Kepler that hasn't hit the front page yet. PHOTO #4 (ALIEN BASES plate 95) is another clear shot of dome structures in a crater. Similar domes may be found in

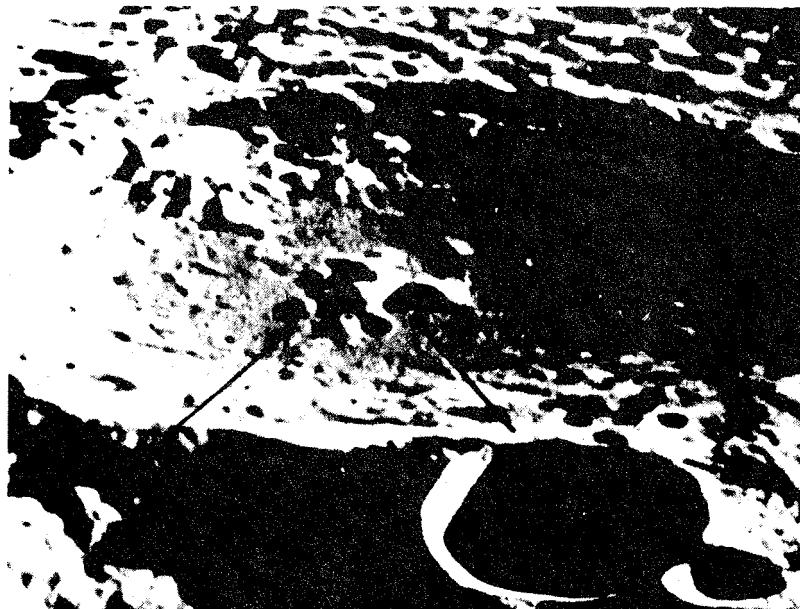


PLATE 95. APOLLO 11 PHOTO OF THE IAU-308. Crater, Lunar back side. Notice dark cross on center peak. Also dome-shaped objects and platform.

MOONGATE--photo no. 14, but this is not pointed out in the text. A close examination of all available NASA photos will reveal a picture which doesn't fit the orthodox story of a lifeless orb, doomed to regulating earth's tides for eternity.

If we accept that the moon is inhabited and may possibly be an active space base in operation for aeons, the where does that leave us? Charles Fort said that we are property. If so, we may now know the location of our owners. Perhaps the lunar inhabitants are tenders of our planetary life wave. I think that the moon is probably the 'other world' of Fort from which emanates the strange activities he recorded. I also think it quite possible that this 'other world' has been and is in contact with "a secret society, or certain esoteric ones of this earth's inhabitants".

The suppression of information concerning our origin and destiny has been the religion of authority since time immemorial, so we are unlikely to find the truth plainly spelled out in material form. External sources of information may guide, but truth comes only from within. Borderland Sciences Research Foundation (POB 549; Vista, CA 92083) publishes two books quite helpful in penetration of the inner plane machinations of the lunar mystery. FLYING SAUCERS ON THE MOON (BSRF #2-F) and MEETING ON THE MOON (BSRF #2-0), both compiled by Riley Crabb, contain a mixture of documented evidence supporting lunar habitation and a metaphysical viewpoint not found in MOONGATE or ALIEN BASES. Both Borderland books are illustrated with a text covering many aspects of our moon's mysteries. I recommend them to anyone pursuing the truth about the moon.

There are many more useful sources of information on this subject which are not mentioned. You must seek out the answers yourself, then pass them on for the betterment of all.

THEY LIVE IN THE SKY

By Trevor James Constable

Pertinent Excerpts From A
Flying Saucer Classic Of
The 1950s, Part IV

"And he laid hold on the dragon, that old serpent, which is the Devil, and Satan, and bound him a thousand years. And cast him into the bottomless pit and shut him up, and set a seal upon him, that he should deceive the nations no more, till the thousand years should be fulfilled and after that, he must be loosed a little season." Revelations 20;2,3.

At about the same time I received the information concerning the fireballs, especially that portion which stated that all did not come from the same craft, I came into contact with the now famous Shaver Mystery. . . and his claim that entities identifying themselves as the "dero" are an underground race living today within our planet. . .

Trevor: "A question that has greatly disturbed me, concerns the presence of an underground race on this planet. I would appreciate any information you can give me."

Ashtar: "At the core of your planet there dwells a greatly degenerated race, an astral race, which is degenerate not so much in science, but in every moral respect as you know and understand it. They are capable of space flight within the astral regions around the earth, but are earthbound. They are the forces of Eranus, whom you call Satan. They emerge at the South Pole. On your surface they have allies who are without morals and without mercy. I give you this information that you may be aware of their existence. I enjoin you to forever close any researches into this astral activity, in the interests of your own welfare. Be on your guard always be careful and vigilant."

Trevor: "These astrals from the earth's core are, I take it, the Dero of legend?"

Ashtar: "No. The Dero are no longer confined in the caves of legend and story, but are reincarnated upon your surface. Many of your eminent scientists, driving forward with the perfection of ever more prodigious blast forces, are reincarnated deros. Because of their prior lives as cannibals and degenerate beings they are prone to exert themselves for destructive ends, since they fall easily under the astral influence."

At this point we might mention the stories related by Gray Barker in his book "They Knew Too Much About Flying Saucers", concerning the black-suited men. These worthies apparently paid unscheduled visits to Saucer investigators with the idea of shutting them up when they got too near the truth.

In my view, some of these Saucer investigators may have stumbled on this center of the earth concept, probed into it, stirred up these forces and consequently been handled harshly by their earthly representatives. These black-suited gents would probably be the "allies on your surface who are without morals or mercy. . . They endeavor in every case to fill those they visit with fear. . . This is a side to the UFO which is best left to those who not only know how to deal with these forces, but are authorized to do so.

Trevor: "In our solar system are there any other physical beings like us?"

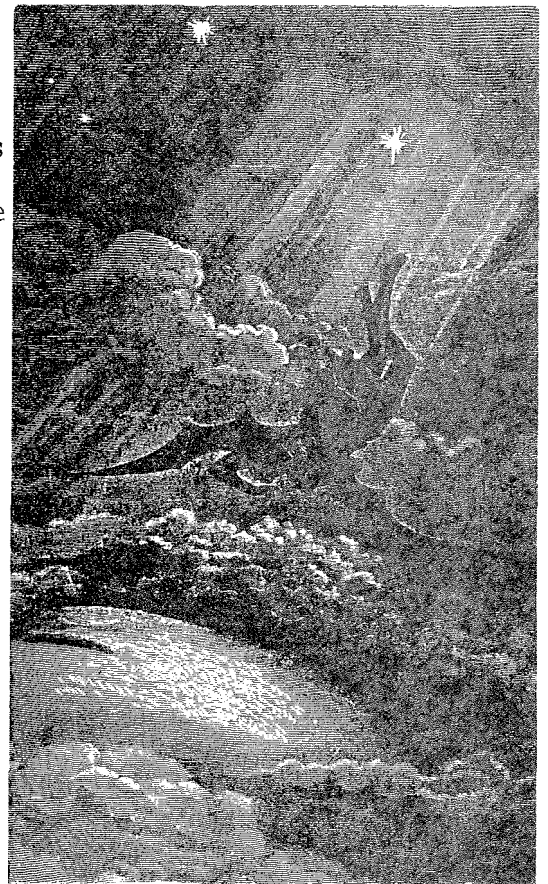
Ashtar: "No. All beings on other planets in your solar system are etherics. On your planet, as you now know, there are two kinds of beings, physical and astral. Outside the earth-moon system in your solar system, all are etheric."

Trevor: "How far from the surface of the earth in our measure do the astral regions extend?"

Ashtar: "125,000 miles. Within them, the astral beings are confined. At certain times of the year, travel to the moon is possible to the astrals when the astral shells of the two bodies overlap. When these two shells separate however, any entities on the moon are cut off from the earth until the next time the astral shells overlap. No physical or astral entity can go beyond the earth-moon system."

Trevor: "Three dimensional craft have been seen in addition to the others described in these contacts. They are believed to be of a mechanical type. Are there such ships and where do they come from?"

Ashtar: "Yes, there are such ships. They come from the continent you call Antartica. Before the Lemurian flood and rebalancing of the earth on its present axis, this was a great civilization. It



Satan approaching the confines of the earth, according to Gustav Dore's artistry. This was after Satan guided the unfortunate inhabitants of the planet Maldek to their doom. Millions of Maldekians fell with Him and are facing the same crisis, and the same choice -- again -- now!

was frozen quickly and its splendor swallowed under the ice. One city remains above the ice with a few dwellers. They have these craft and there are also some in Tibet. These dwellers are entirely separate from the forces in the center of the earth and plan hostility to no one. Mechanically propelled, these craft also outperform earthly aircraft."

THE KINGDOM OF THE EARTHBOUND

Trevor: "What is the nature of the astral regions around the earth?"

Ashtar: "The astral world is divided into two broad sections. First there are the bodiless entities from your surface, the so-called dead people, who must become incarnate again in order to pass completely to the etheric state. Some of these entities are waiting what will be their last incarnation. Others are those who have had their carnate existence ended abruptly or accidentally, such as criminals or soldiers. All these entities have in common the intense desire to become fleshly once more, in order that they may qualify to be no longer earthbound, when their incarnations terminate. This is the Garden of Waiting.

"There are also the monstrosities and phantasmagoria which are degenerate thoughtforms. The other great section of the astral world is the astral regions of evil, which surround and interpenetrate the earth, inhabited by beings who are forever discarnate and forever earthbound by decree of the Great God of the Universe. These beings cannot enter the Garden of Waiting. It is against these forces that we of the etheric world are warring."

Trevor: "What form does this war take? Is it a clashing of space ships in combat?"

Ashtar: "This is not a matching of violences, as you suggest, but a battle for the control of earthly minds. Our purpose is to overcome the destructive influence, the physically violent influence which the dark ones seek to exert over mankind. Our purpose is to nullify the astral influence by restraining beings devoted to destruction and to physical violence. The dark ones seek to relegate the whole world to the darkness wherein they dwell and have power, and thereby increase their influence further. Our task, as decreed by the Heavenly Father, is to nullify, overpower and banish the work of the dark ones by good influences upon humanity. This is the true nature of the battle rather than spacecraft versus spacecraft."

Trevor: "What is the nature of the core of our planet? Is it solid? Or is it hollow?"

Ashtar: "The center of the earth consists of matter of a density comparable to air, although it is not air. You would term it hollow in your expression. It is here that the forces of Satan dwell. Near the South Pole they emerge in their craft and circle the planet. Clumsy and primitive by our technology, their craft are still greatly advanced over yours, and they are easily able to outperform and to outmanoeuvre mechanical craft of physical manufacture. They are con-

siderably faster, being capable of speeds in excess of three thousand miles per hour."

Trevor: "How far above the surface may the dark forces penetrate and can physical man penetrate this far? That is, will man ever be able in physical form to penetrate this far?"

Ashtar: "The limit of their altitude attainment is 125,000 miles. Physical man is also limited to this extension. In the upper portions of it however, man in the physical form will exist only with extreme difficulty and after years of training and development. As previously described, when the moon's astral envelope or aura overlaps with that of the earth, commerce is possible. At times of contact the astral entities from the core of Shan travel to the moon."

THERE IS A LUNAR MAFIA, THE MEN IN BLACK

Trevor: "What is the nature of life on the moon? Are the moon people physical or astral?"

Ashtar: "The moon people are physical in form and astral in allegiance. They are allied with Satan."

Trevor: "Are these craft from 'downstairs' comparable to the Atlantean machines?"

Ashtar: "They are almost identical with those craft. They are, of course, made of a material that is akin to but of a higher vibratory form than your own matter. They are, therefore, not normally visible to your optics."

Trevor: "Is there any broad general method by which the etheric or friendly craft can be distinguished from the astral machines from the center of the earth?"

Ashtar: "As a general rule you may conclude that all cigar-shaped craft are potentially hostile to your people. These are the craft from the center of the earth which have carried out and are carrying out hostile acts. Our craft are for the most part heel-shaped or disc-shaped. This is a rule of thumb as you term it, for distinguishing between them."

Trevor: "Are there any basic rules, even if they are broad rules, by which the various craft can be identified when they appear solely as light manifestations?"

Ashtar: "There is a broad general rule which may apply for the purposes of identification. It is not exact, but is a rule of thumb. The true interplanetary craft, the ventlas of our forces will appear to your optics with a manifestation of colored lights, usually green red and white. They will sometimes appear constantly red and green, other times they will appear to be flashing. Those of the satanic forces seldom exhibit color, but come with white or bluish white manifestations. This should aid you in selecting the ships with which you might have contact." (To be continued with excerpts from Chapter Four: "Green Men, Monsters and Skeptics")

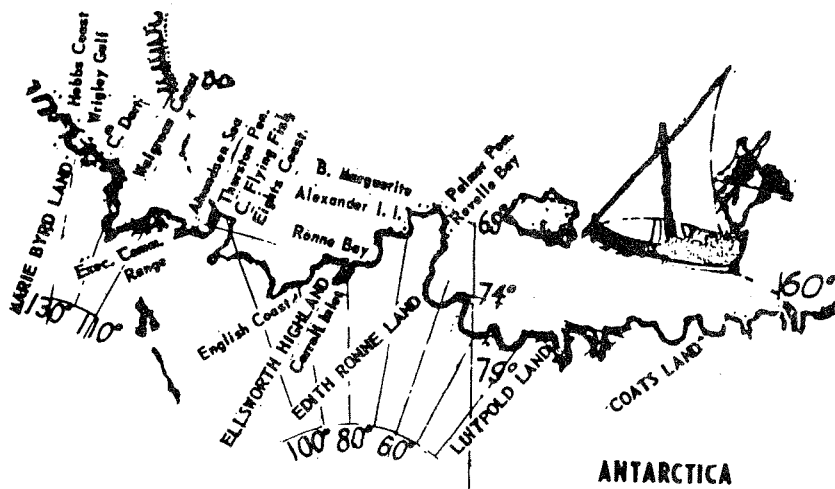
THE WORLD POWER GRID SYSTEM, PART V

By Riley Hansard Crabb

Rainbow City, the one unfrozen Atlantean metropolis in the Antarctic, myth or reality? When Ashtar told Trevor James Constable in 1956 that such an Antarctic Flying Saucer base existed, the implication was that it had been "in being" since before the Flood -- that is, since before the Polar Flip of 9564 B.C. which had wiped out most of the Atlantean empire.

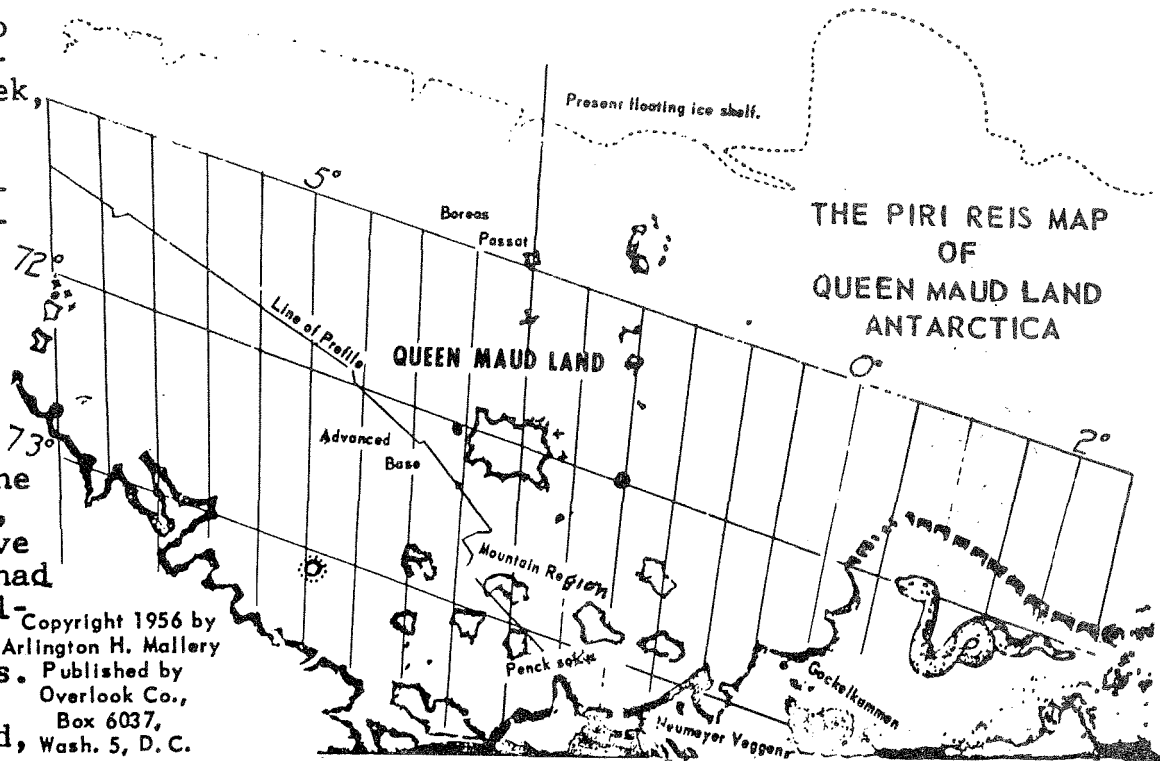
At the same time, on the other side of the United States, Capt. Arlington H. Mallery was poring over the Piri Reis maps from the 16th Century. These maps showed with astounding accuracy the outlines of the Antarctic continent before it became covered with ice! In modern times the Antarctic continent wasn't discovered until 1818, but the Reis charts are only copies of earlier charts developed from a grid system and aerial photos by an advanced civilization whose existence can only be guessed at by the orthodox and the uninformed. This proves how thoroughly the Creator can wipe out a civilization once it has made its contribution to evolution, and its course toward ultimate evil must be stopped, either by fire or by water. Knowledge of the Grid system and the power it confers was preserved only in certain priesthoods and secret societies.

THE PIRI REIS MAP OF THE PACIFIC & ATLANTIC COAST OF ANTARCTICA



When Osiris fled the last of the great Atlantean civilizations, long before it's sinking in 9564 B.C., this was part of the tradition he brought with him when he settled down at Abydos on the Nile with a group of his initiate students. Plato taught the Grid system at his Academy in Athens. Did he learn it directly from Egyptian priests? Or from his own mentor, Pythagoras, who took Egyptian initiations? Did these educated Greek initiates also have maps of the antedeluvian world, part of the Western Mystery Tradition, carefully passed on to each generation of student initiates? It

would seem so and that Columbus, a Greek, was one of them; for we have this interesting observation by Matthew Warren: "Piri Reis, a distinguished geographer and Turkish admiral of the 16th Century, had as a slave a pilot who had been with Columbus on three voyages. The pilot, when captured, had with him a



Copyright 1956 by
Arlington H. Mallery
Published by
Overlook Co.,
Box 6037,
Wash. 5, D. C.

map used by Columbus. Using this map and eight other Greek maps which had been handed down from the time of Alexander the Great, Piri Reis compiled a world map. This 1513 map of the Atlantic ocean is only one of the Piri Reis maps found, as yet." The time was August 26, 1956, the place Georgetown University, Washington, D.C, the 510th broadcast of the Georgetown University Radio Forum. Warren was interviewing Arlington Mallery, map expert, Rev. Daniel Linehan, seismologist and M.I. Walters, cartographer.

The Admiral's full name was Piri Ibn Haji Memmed but he was actually a Greek Catholic by birth who took up piracy as a career, and did so well at it that the Turks finally made him governor of Egypt. Of course he made enemies along the way and they finally did him in. He was beheaded in 1554 A.D.

Warren: "Mr. Walters, you say that these Piri Reis maps have been checked by the United States Navy Hydrographic Office?"

Walters: "Yes."

Warren: "As far as you are concerned they are accurate?"

Walters: "Yes."

Warren: "How old are these maps?"

Walters: "These maps go back 5000 years and even earlier. But they contain data that go back many thousands of years before that. . . We have taken the old Piri Reis charts and the new charts that the Hydrographic Office produces today and made comparisons of salient peaks and mountains. We have found them to be in astounding agreement.

In this way we have checked the old work very closely. We put very much confidence in what Captain Mallery has disclosed.

Warren: "Mr. Mallery, this must then lead to the conclusion that there were competent explorers and map makers along the coasts of the Atlantic long before Columbus."

BEFORE THE POLAR FLIP OF 9564 B.C.

Mallery: Several thousand years before. Not only explorers but they must also have had a very competent and far-flung hydrographic organization because you cannot map as large a continent as Antarctica, as they apparently have -- half of it -- or as extensive an area as Greenland, or half the continent of North America, as we know they did do -- probably five thousand years ago. It can't be done by a single individual or small group of explorers. It means an aggregation of skilled scientists who are familiar with astronomy as well as methods required for topographic surveying. . . I would not have been able to solve this projection if it had not been for the fact that we found the map of North America that showed so many points in latitude and longitude correctly, as we could judge by our present maps, that I was able to compute the method which they used to draw their grid on which their chart was plotted. A grid is formed by the latitude and longitude lines together -- and on which a map can be read. These lines alone make it possible.

"This projection, as we call it, is entirely different from anything used in modern cartography. It was probably the forerunner of our present Mercator charts, a straight-line drawing, and like the Mercator was used exclusively for navigational purposes."

Warren: "Father Linehan, have you found any seismic studies -- or by these studies any areas in Antarctica -- which agree with these maps?"

Linehan: "Actually, my own seismic studies were not on any long, extended area. Most of my work was of an engineering aspect for the U.S. Navy in locating on various bases as to whether the ice was thick enough to establish a camp. John Viers of the Norwegian-Swedish-British Expedition ran quite a seismic line in Queen Maud Land and that seismic line agrees very well, extremely well with the maps that Captain Mallery is speaking about. He shows that even though the ice surface itself may rise as much as 3000 feet above sea level, below that ice you have land masses, and we believe rock -- almost bare rock. . . We feel that the seismic data done most extensively by Jon Viers proves these ancient maps without any doubt for this one area alone around the Weddell Sea and the Queen Maud Land area."

Warren: "Mr. Mallery, other than the startling fact that there were map makers 5000 years ago, what does this mean to scientists today?"

Mallery: "In the map of Queen Maude Land, the map indicates that the glacier had just begun to appear at the middle of Queen Maud Land, but the bay on the map that Columbus had was still entirely uncovered. Now only the peaks of the mountains that were on the island show above

the ice. The ice has added about a mile at least since that map was made."

At right is our simple chart of the U. S. Navy's seismic soundings at the South Pole in 1957, a year after the Captain Mallery interview, and reproduced from our talk "Flying Saucers and America's Destiny". "Through radio-carbon and ionium testing of the age of the ice it was found that the 10,000 foot plateau at the Pole is about 10,000 years old!" So there is support for Ashtar's statement to Trevor James Constable -- also in 1957 -- that the continent contained a civilization before it became locked in ice.

Warren: "Where were these Piri Reis maps before you discovered them?"

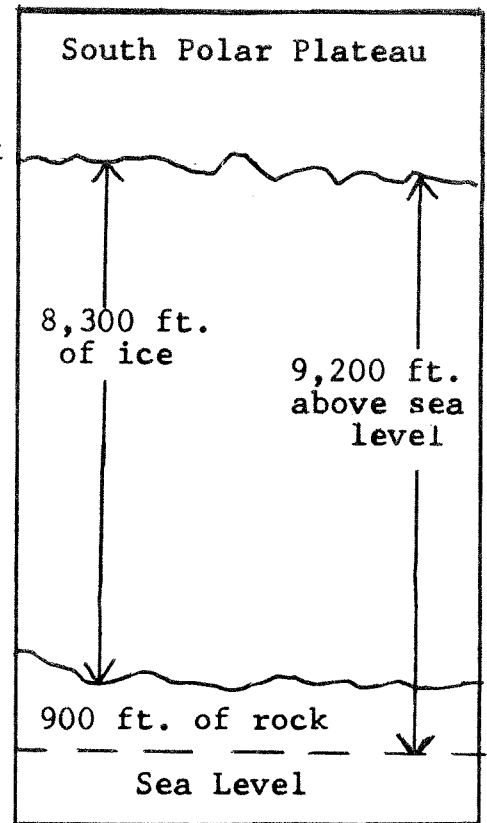
Mallery: "In the Library of Congress."

Warren: "This is interesting. Why is it that no one had discovered these before?"

Mallery: "They had been discovered. But no one could read them! It just happened that Mr. Walters and I, in our search for old maps, uncovered that ancient map of North America which was brought to Iceland in 1568 by Father Thorsden, who was a parish priest in Staden, Iceland. It was deposited, I presume, in the Cathedral in Iceland and somehow it got over to this country. No one paid any attention to it, however, until we finally, after checking over these ancient maps, happened to notice one day that it had marked upon it an old Icelandic name for glacier, and also another Icelandic name for lava fields. So I took it over to Dr. Capps of the Geological Survey and from there we were able to go to town on the maps because we had the projection." . . .

Warren: "Tell us a bit more of the maps, if you will, Mr. Mallery."

Mallery: "The important thing about these maps is that they bring home to us the fact that the oldest human records we have, and which are absolutely authentic, are the navigation charts. A land map can be almost anything. If your map is wrong you can go over to the nearest gasoline station and inquire the way. But if you are on a ship and the map is wrong, why, the captain usually goes down with the ship. That is the rule of the sea. That is what we have found with these ancient maps -- they are maps that have survived for thousands of years and have been preserved only because they have been accurate. . . . About three years ago the Chief Engineer of the Hydrographic Office handed me a copy of a map which had been sent to him by a Turkish Naval officer. He suggested that I examine it

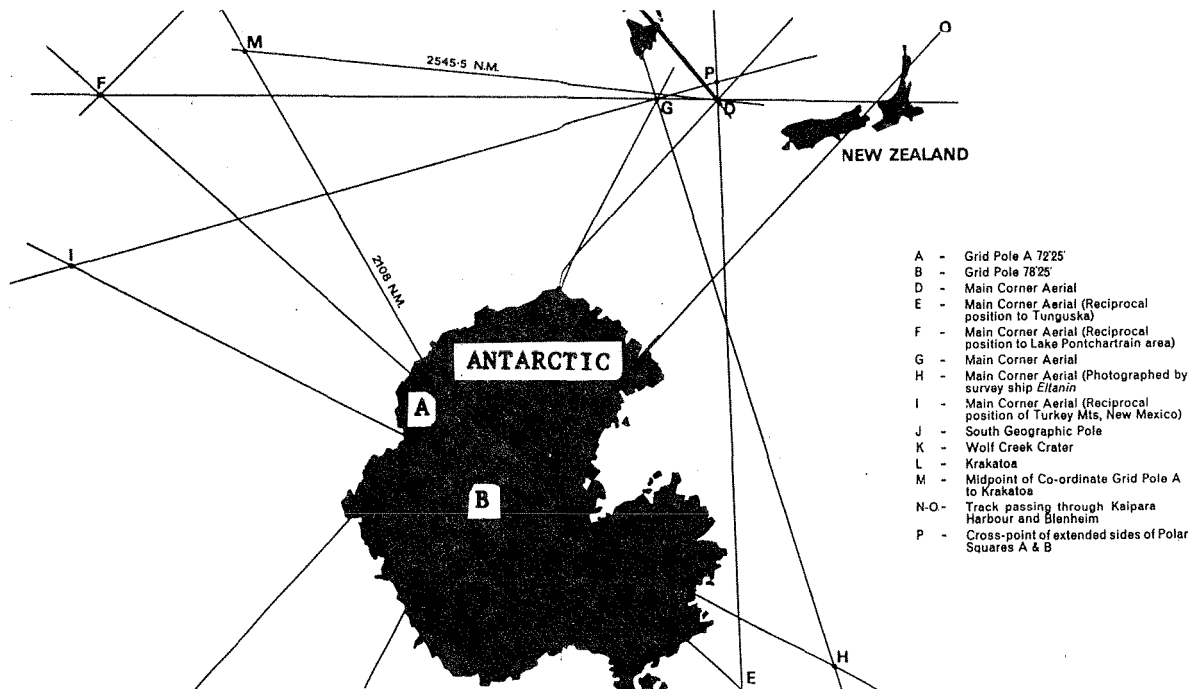


in the light of the information we already had on the ancient maps. After making the analysis of it, I took it back to him and requested that the Office check both the latitude and longitude and the projection. When they asked why, I said 'There is something in this map that no one is going to believe coming from me, and I dont know whether they will believe it coming from you.' That was the fact that Columbus had with him a map that showed accurately the Palmer Peninsula in the Antarctic Continent. Here is a copy of two-thirds of that map, which shows that Columbus had with him a map of Yucatan, Guatemala, all of South America to the Strait of Magellan and a substantial part of the coast of Antarctica."

Warren: "How could they have been so accurate so many thousands of years ago when we are just now -- or just recently -- coming to know the modern methods of mapping. How is it possible?"

Mallery: "That is a problem we have puzzled over, too. We dont understand how they could have been so accurate. . . you will probably recall the tradition that the Greeks and the airplane -- maybe they had the airplane. But the fact is they did it. They knew their longitude absolutely correctly! This is something we did not know ourselves until about two centuries ago. . . "

Not the Greeks, Captain Mallery, the Poseidians of the last great Atlantean civilization of over 11,600 years ago, Poseid. Below we have reproduced part of the end paper of Capt. Cathie's book, "Harmonic 33", showing his Grid lines leading from Australia and New Zealand to the Antarctic continent. It is our guess that he has pinpointed the location of Rainbow City where his Grid lines cross at either A or B. (To be continued in the next Journal)



CLIPS, QUOTES & COMMENTS —

LUCIFER VS JEHOVAH ACCORDING TO BLAVATSKY

"The 'Rebels' (of Lucifer) would not create will-less irresponsible men, as the 'obedient' Angels (of Jehovah) did; nor could they endow human beings with even the temporary reflections of their own attributes; for the latter, belonging to another and a so much higher plane of consciousness, would leave man still irresponsible, hence interfere with any possibility of higher progress. No spiritual and psychic evolution is possible on Earth -- the lowest and most material plane -- for one who, on that plane at all events, is inherently perfect and cannot accumulate either merits or demerits. Had Man remained the pale Shadow of the inert, immutable and motionless Perfection, the one negative and passive attribute of the real I am that I am, he would have been doomed to pass through life on Earth as in a heavy dreamless sleep; hence a failure on this plane.

"The Beings, or Being, collectively called Elohim, who first pronounced -- if indeed they ever were pronounced -- the cruel words 'Behold, the man is become as one of us, to know good and evil, and now, lest he put forth his hand and take also of the Tree of Life, and eat and live forever. . . ' must indeed have been the Ida-baath the Demiurge of the Nazarenes, filled with rage and envy against his own creature, the reflection of which created Ophiomorphos.

"In this case it is but natural -- even from the dead-letter standpoint -- to view Satan, the Serpent of Genesis, as the real creator and benefactor, the Father of Spiritual Mankind. For it is he who was the Harbinger of Light, bright, radiant Lucifer, who opened the eyes of the automaton created by Jehovah, as alleged. And he who was the first to whisper 'in the day ye eat thereof ye shall be as Elohim, knowing good and evil', can only be regarded in the light of a Saviour. An Adversary to Jehovah, the 'personating spirit', he still remains in Esoteric Truth the ever-loving Messenger, the Angel, the Seraphim and Cherubim who both knew well and loved still more, and who conferred on us Spiritual, instead of Physical Immortality -- the latter is a kind of static immortality that would have transformed man into an undying 'Wandering Jew'." (Pages 245-246, Vol. 3, "The Secret Doctrine", Sixth (Olcott) Edition, 1952, Adyar, India.)

THEY DID NOT MARRY AND THEY DID BURN!

LA "Times", Feb. 9, 1984: "The Roman Catholic Archdiocese of Los Angeles and seven priests were sued for \$15 million Wednesday by a young woman who claims she was drawn into sexual intercourse with the clerics as a teen-age parishioner and had a baby by one of them. In a Los Angeles Superior Court civil suit charging conspiracy, fraud and clergy malpractice, the woman, Rita Milla, said she gave birth to a daughter Oct. 12, 1982, in the Philippines, where the

priests had sent her to protect the secrecy of the relationship.

"Now 22, Milla lives with the child, Jacqueline, and her parents in the South Bay area and is on welfare. . . Asked during the press conference (in her attorney's office) how she could be drawn into sex with the priests, Milla said, 'It was mostly like I understood their authority and felt that they would know, that they would know what is a sin.' She said she was told that sex was natural and that priests sometimes 'get lonely too! . . .

"At the Archdiocese, Father Joseph Battaglia, director of communications, said church officials will have no comment on the lawsuit while it is in litigation. That decision was made by Cardinal Timothy Manning, archbishop of Los Angeles. Last July Milla met with Bishop John Ward in Los Angeles to inform him that the father of her baby was a priest and was told there was nothing he could do. Ward, who is not a defendant in the suit, could not be reached for comment. The woman said she had described her plight at different times to other priests but was given no solace, and was told by one that she was probably responsible for seducing the seven fathers and should repent. . . Her suit claims that a priest made sexual advances to her while she was in the confessional. . . "

POWER WITHOUT RESPONSIBILITY

LA "Times", March 10, 1984: "In a response filed late Thursday in Los Angeles Superior Court, John P. McNicholas, attorney for the archdiocese, contended there are no grounds for including the church in Rita Milla's \$21 million damage suit. 'The Roman Catholic archbishop of Los Angeles may not be held liable for a priest's acts of a sexual nature, because such conduct is not within the course or scope (of the) priest's duties as a matter of law.' . . . "

The Church has always considered itself above sex, ever since the bishops created a state church for Constantine at the Council of Nicea, 325 A.D., and the little bastards created by celibate priests are the responsibility of the State, the doers -- that is, the Freemasons -- as explained by Max Heindel in the lead article in this issue of the Journal; for, as the "Times" reporter says, Rita Milla and her illegitimate daughter are on welfare; and the father, along with the other unchaste priests, has been transferred out of the archdiocese.

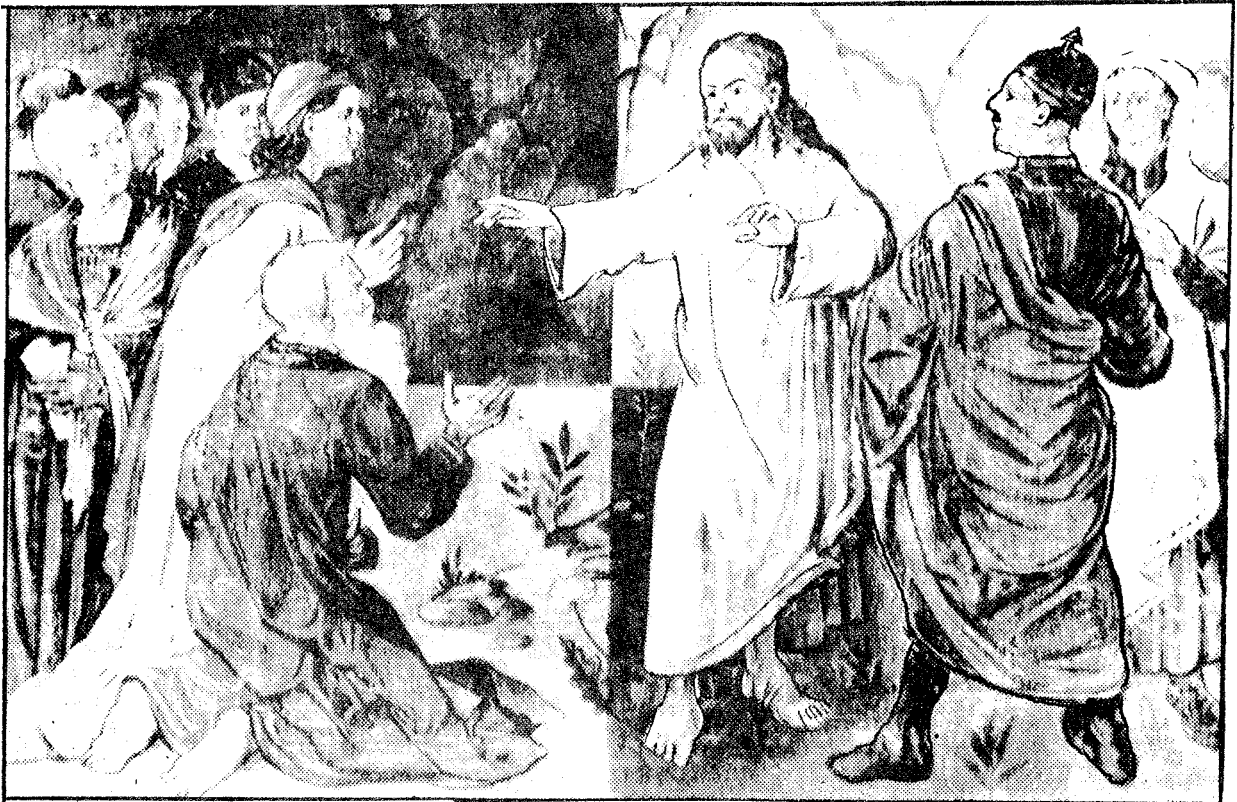
"LIQUIDATED BY OUR OWN PEOPLE!"

Jehovah's religious fanatics of Lebanon are at it again. The Shia Muslims, the Druze Muslims and the Maronite Catholics show their devotion to their Gods by doing their damndest to kill each other. While at a luxurious castle in Lausanne, Switzerland, the "godfathers" of these cults threaten each other with their pagan power. "There is no agreement on anything," Druze "godfather" Walid Jumblatt said Sunday night, bemoaning the fact that fighting in Beirut continues while no progress is being made here in the talks. "The fighting continues because there is no political will to arrive

at a compromise (in Lausanne), and there is no political will because the fighting continues. If we don't achieve anything, we will be liquidated by our own people. We can't just sit here in this luxurious castle!" (LA "Times", March 19, 1984)

There is another unseen but very real "godfather" at that conference in Lausanne and in Lebanon, the 10 Hertz ELF waves from huge Tesla Magnifying Transmitters in Russia. The Soviet Woodpecker is intended to cause riotous behavior and it goes through everything!

AT LAST! A PORTRAIT OF THE FALSE CHRIST, LOOEAMONG!



The German artist and Nazi Party member, Richard Holst, painted this picture in 1939 when Hitler's legions were triumphantly invading Poland. This is the Nazi/Fascist Christ, of course, and beside Him is his prize pupil and admirer, Adolf Hitler, jack boots, comic moustache and all. This is an Associated Press photo of the painting, on display in the town of Muench.

1500 EARTHQUAKES IN TWO MONTHS!

Back in 1900 Nikola Tesla predicted that his TMTs (Tesla Magnifying Transmitters) suitably modified and tuned, could cause earthquakes anywhere in the world. Russian engineers and physicists took him at his word after World War II began the necessary research and development. The proof of their success, according to Tom Bearden and Andrija Puharich, is the eruption of Mt. St. Helens in the State

of Washington a couple of years ago, and the great Tangshan earthquake in north China, July 28, 1976, which killed a million people and leveled a city. The center for the R&D carried on by these Russian Dr. Fausts is Saryshagan, in southeastern Russia. They have sowed the wind, now their people are reaping the whirlwind, as indicated in this brief dispatch in the Los Angeles "Times" 3/16/84:

"A series of 1,500 earthquakes ripped through the Central Asian Soviet republic of Uzbekistan in the last two months, leaving 9,000 families homeless and reducing thousands of buildings to rubble, Soviet television said. The quakes were recorded in the region of Namangan, about 1,800 miles southeast of Moscow. No deaths or injuries were attributed to the quakes, although Soviet media rarely give casualty figures. One of the worst of the tremors, reportedly measuring 5.0 on the Richter scale, occurred on Tuesday."

WOMEN'S LIB IN JORDAN

"Jordanians voted for the first time in 17 years to fill vacancies in the lower house of Parliament. Results were not expected until today. More than 500,000 Jordanians, including women for the first time, were registered to vote. Police guarded each of the nation's 800 polling centers in anticipation of brawls between supporters of the 101 candidates, and Jordanians were barred from carrying firearms. The government declared election day a public holiday to encourage voting." (LA "Times", March 13, 1984)

Obviously, King Hussein is one of the more enlightened rulers in the Arab world. Equally obvious is the liberal influence of his American wife, Queen Elizabeth! For most Arab rulers we can't be sure they are married or, if married, how many wives they have! For they never appear in public. But on television the other day here was Queen Elizabeth of Jordan, bare headed and in Western clothes, welcoming the arrival of Queen Elizabeth of England and Prince Philip to Jordan at the airport. This symbol of women's liberation is not lost on women in the Arab world. Isis will have Her way.

THAT LANDRUM UFO CASE IN THE NEWS AGAIN

"Two women and a boy have sued the government for \$20 million, alleging radiation exposure and other injuries in a brief encounter with an Unidentified Flying Object, federal court records showed yesterday. Vicki Landrum, 60, and her grandson, Colby, 10, of Dayton, Texas, and Betty Cash, 54, of Helena, Al., claim in the suit they were riding in a car on a rural highway near Houston, Texas when the encounter occurred the night of Sept. 2, 1983. 'I've never believed in UFOs,' Cash said in a telephone interview. 'I was the first one to laugh. I was terrified. Now I'm afraid to look up!' She said she believes the object was not from outer space but is a secret government device. She said it was surrounded by military helicopters." (San Francisco "Chronicle", January 21, 1984)

The three flabbergasted Texans suffered extreme radiation burns

when they got out of their stopped car and watched the huge, diamond-shaped object, glowing brightly, floating along over the highway with an escort of at least twenty helicopters. The next day the women were so sick they could not go to work and eventually had to close down their restaurant. Their doctors want to know, from the government, what kind of radiation the women got from the UFO so they can be properly treated -- also the boy. So far, from the government, only a thunderous silence on a subject which is even more secret than the Atomic Bomb project of World War II.

SCHIZOPHRENIA AND ELF WAVES? THAT'S WHAT THE MAN SAID!

"A few weeks ago a middle-aged Ukrainian man with a history of long years of schizophrenia was brought to me in the hospital by the police. At times he would babble incoherently while rolling his tongue around repeatedly and jerking his head around. At other times, however, he would pull himself together enough to tell me he could actually hear in his head the incessant Woodpecker flapping of the Soviet ELF waves. However, he said that although these 'radio' waves were originating in Russia, they were quite strong within the hospital itself because the waves were 'coming from the hospital basement'. By this I speculated that the ELF waves were somehow resonating within the heavy machinery in the subterranean floors of the hospital. He said the Russian radio waves were driving him crazy!"



Dr. R.S., British Columbia, Canada

Sounds like a tough combination for any physician to handle, Doc. The Ukrainian is an obvious case of possession by an earthbound spirit, but a successful exorcism still would not shut off the Russian Woodpecker broadcasts, a 10 Hertz signal riding a 5.340 Megahertz carrier and augmented by the Low Frequency beat of air conditioning or other equipment in the hospital basement. And your patient may welcome the suffering because of a deeply buried guilt complex -- or a desperate need for attention. If so, cure for either symptom would only be temporary. Nevertheless, a pocket-sized ELF wave generator, oscillating steadily at 8 Hertz night and day, might make the obsessing spirit so uncomfortable as to drive him or it out, and entrain the aura enough to neutralize the Russian Woodpecker signal -- IF the patient could be convinced of the necessity for carrying it. Good luck!

Effectiveness of pocket-sized ELF wave devices has been verified by the medical authorities in Australia. They have notified Tom Dunn of New Zealand, who manufactures and sells the ELF wave "Harmopulse" that if he ships any more Harmopulses into their country, the devices

will be confiscated. This has already happened to some of Dunn's orders, including one paid for and shipped to an Associate here in Southern California. It hasn't arrived, neither has Dunn's warning letter to us. The schematic for his Harmopulse was in the Jan-Feb 1983 Journal, page 22. Schematics and parts lists for other ELF wave devices are in the May-June 1982 Journal and in BSRF 19-A, "ELF Waves, Psychotronic Warfare and Welfare", \$5.50.

HOME DEFENSE AGAINST THE WOODPECKER

"Many Thanks for the suggestion. We have placed two crystals on the fuse box where the electric power line comes into the house and have already noticed a more pleasant atmosphere and feeling in the home."

E.C., Gresham, Oregon

In his talk on Psychotronic Warfare at the U.S. Psychotronic Association convention in Atlanta, Georgia in 1978, Bob Beck pointed out that the Russian Woodpecker and carrier waves are higher harmonics of our 60 cycle, alternating house current. This makes the electric wiring system of every American home an antenna for the Russian broadcasts. A borderlander in this area of Southern California has been experimenting with small chunks of local granite as natural rock crystals for healing and other positive vibes. He depends on the psychic sensitivity of his 12-year old son to monitor clairvoyantly the effects he is seeking. When a small piece of granite was accidentally placed near the fuse box of their home, the son said the aura of the house wires changed from red to green! This significant piece of information was passed on to the Oregon Associate who had complained of negative vibes in his home.

SPEAKING OF THE U.S. PSYCHOTRONICS ASSOCIATION

Word from Chicago is that the 1984 convention dates have been set, June 27th through July 1st, and it is back to Atlanta, Georgia and the campus of Oglethorpe University. Write to Bob Beutlich, 3459 Montrose Ave., Chicago, Illinois 60618 for registration costs, presentation of papers and other details.

The USPA made the April 1984 issue of "Omni" Magazine, in an article on "Psychic Warrior" by Ronald M. McRae. The author claims that a member of our Psychotronic Association has been engaged by the government to create "psychic shields for its missile crewmen, the shields, produced by a member of the USPA, would be activated by a drop of blood or a lock of hair from the bearer". Of course the term "psychic" is "verboden" in government and orthodox science circles, so they use a translation of the term originated by the Russians, "Novel Biological Information Transfer Systems". I remember dowser Verne Cameron telling us of being invited by the Office of Naval Intelligence (ONI) at San Diego, back in the 1960s, to come there and try to locate Navy submarines in the north Pacific, using his dowsing instrument, the Aurameter, to indicate points on the map given him. Position of the Navy subs was known to the ob-

serving officers but there was no indication from them as to whether or not Cameron was successful. He was thanked, given some kind of a fee for his services, and dismissed.

OUR STATISTICAL APPROACH TO PSYCHISM

"In Russia the (telepathic) effort is to receive. This is sometimes being called 'being nosey', poking into where you do not belong. It is sometimes known as picking minds. You do it here, your Service peoples practice all the time, getting telepathic messages, not only from Russian minds but from every mind everywhere. Then these are mounted on papers and the choice ones are taken and run through a machine -- what you call -- ?" said the Yada di Shi'ite.

"Computer?" replied a class member.

"Computer," agreed the Yada. "And the computer makes a declaration of their value. Isn't that wonderful? Isn't that remarkable? You see, you must learn to get along. Everybody must learn to get along with one another, or you'll have to get along without one another -- not even yourselves! You wanting, surely to come to the right conclusions; but you must co-exist; or you'll have no existence.

"Russia has been delving into the Mystical Arts for the last 20 years. You here, perhaps for the last 10 years, maybe 12 -- but no more. Your scientists for so long made the mistake of believing only what they could see and measure; so they became your authority when they had no authority in themselves. . . ." (The Yada di Shi'ite, head of the Inner Circle, the Powerhouse behind BSRF, channeling through Mark Probert at a Closed Class, No. 6, in San Diego, California, August 18, 1967. BSRF 10-R, Class No. 6, \$3.00 postpaid.)

NOT VISIONS, BUT "REMOTE VIEWING"

McRae, in his article in the April 1984 "Omni" writes: "In the Seventies the Navy signed a \$50,703 contract with the California think tank SRI International (Stanford Research Institute) to determine whether psychics could detect remote electromagnetic sources. If psychics could detect flashing lights in another room, the thinking went, perhaps they could also detect very weak electromagnetic emanations from submerged submarines. . . . The lengthy report never once mentions the word psychic, although the researchers, SRI's Harold Puthoff and Russell Targ are perhaps the world's best known psychists in the field of psychic research. SRI delivered the final report for the contract in 1978, claiming success with several psychics. But the Navy isn't bragging about its apparent success. In response to congressional inquiries about the contract in 1982, Navy spokesmen refused to characterize the study as psychic.

RADIONIC INSTRUMENT: "A MULTISPECTRAL IMAGE ANALYZER"

"By far the wierdest project ever funded by any government agency was the 'multispectral image analyzer station', which the Navy bought in 1977 from Virginia chiropractor and psychic Charles Whitehouse. He

is a board member of the United States Psychotronics Association, Inc, an organization producing electronic devices that supposedly amplify psychic energies. Whitehouse assured the head of the photographic research and development for the Navy, Captain Robert Skillen (now retired) that the Navy could locate a Soviet submarine simply by inserting a photograph of the sub into his machine.

"'It is possible to detect a submarine this way,' Skillen still asserts. Whitehouse trained several persons from Skillen's department and from the CIA to operate the device, and the Navy shelled out a grand total of \$5,111 for the little black box. 'The work that Whitehouse did was creditable,' Skillen maintains.

"For his part, Whitehouse still proudly displays the check stub and the receipt for 'One Multispectral Image Analyzer Station'. He has also used the same machine to treat cancer patients at his chiropractic clinic, correcting 'holes' and 'imbalances' in the patient's auras -- an invisible psychic halo -- by shining various combinations of colored lights on their bodies. Any malady can be cured by the proper combination of lights, Whitehouse claims, and the analyzer's technical manual even lists a cure for 'Bombs (A and Hydrogen)'.

"Other government agencies, like Civil Defense and the Air Force showed no interest in a machine that could 'cure' the A-bomb, but the Virginia board of medical ethics did. Board investigators accused the doctor of defrauding patients, and Whitehouse has migrated to Thailand where he hopes 'Life will be more leisurely'.

ACKNOWLEDGEMENT OF RUSSIA'S LEAD IN PSYCHIC RESEARCH

"Equally astounding however," continues McRae, "were the conclusions of a 1972 Defense Intelligence Agency (DIA) study, originally classified top secret but released in 1978. 'Soviet efforts in the field of (psychic) research sooner or later might enable the Russians to do some of the following:

"A. Know the contents of top-secret U.S. documents, the deployment of our troops and ships, and the location and nature of our military installations.

"B. Mold the thoughts of key U.S. military and civilian leaders at a distance.

"C. Cause the instant death of any U.S. official at a distance.

"D. Disable, at a distance, U.S. equipment of all types, including spacecraft.

"These apocalyptic predictions, incredible as they seem, have been voiced repeatedly in intelligence evaluations. According to another DIA study released in 1978, Soviet psychotronic weapons 'would pose a severe threat to enemy military, embassy, or security functions'. The DIA also suggested that telepathic hypnosis could be 'targeted against U.S. or allied personnel in nuclear missile silos'. So in 1981 the Air Force seriously considered buying the 'psychic shields'. . . ." Based on the proven principle of the "wit-

ness" of the Radionic practitioner or the "bait" of the Kahuna.

TANTRIC BUDDHISM VS THE U.S. NAVY

In his "Psychic Warriors" article in the April "Omni" Magazine Ronald McRae reveals the Navy's suspicions that magickal operations may have been directed against some of its vessels operating in Vietnam waters, and confirms your editor's thoughts about such matters back in the 1960s. "During the Vietnam War the Navy suspected that 'psychic mishandling' may have triggered a rash of mysterious bomb explosions on carriers operating in the Gulf of Tonkin. Could excited launch-control officers in a missile silo inadvertently disturb the navigation computers and destroy Washington instead of Moscow? Do silos need psychic shields? The Pentagon would certainly like to know."

When the Admirals turned to the occult scientists of the Office of Naval Intelligence the answer was yes! But the moral question is, should a trained psychic lend his God-given abilities to protect an atomic missile -- and its silo operators -- so they can launch a doomsday weapon that will kill a million Russians at one blast? And then there is the kindly warning of the Yoda di Shi'ite to that San Diego class in 1967: "Everybody must learn to get along with one another, or you'll have to get along without one another -- not even yourselves!"

A GOOD EXAMPLE OF RUSSIAN MIND CONTROL?

"In 1977 Samuel Koslov, the Navy's Assistant Secretary for Research and Development learned that the Navy had a contract with the Stanford Research Institute to study 'ELF Waves and Mind Control'. Because the human brain generates extremely low frequency electrical signals scientists speculate that transmitting strong signals in these frequencies might interfere with the natural brain activity of people nearby, producing effects ranging from hypertension to sudden death, but the mind-control label upset Koslov. He ordered all Navy funded psi research stopped."

And this was only a year after the Soviets started their ELF wave broadcasts from giant Tesla Magnifying Transmitters at Gomel, Kiev and Riga! I think McRae missed the boat on this one; for this appears to be a perfect example of Point B of the DIA report of 1972: "Mold the thoughts of key U.S. military and civilian leaders at a distance."

"'This sort of talk encourages people to take off on wild-goose chases,' Kosloff says. 'If the Soviets are really wasting money on this nonsense they are doing so because their newspapers reported that we had opened a psychic arms gap. I can show you the clippings.' . . . The SRI contract was cancelled but other projects were spared. Currently research on the effects of ELF on the human brain is well funded and highly classified. . . ."

And there are other examples of mind-manipulation since then.

USING MIND-CONTROL TO "REMOTE VIEW" THE FUTURE

The Military Services aren't the only government agencies engaged in mind-control research; and when Senator Proxmire, of Wisconsin, learned of another such program carried on by Putoff and Targ, he was dismayed at such frivolous waste of taxpayer's money; so this political flathead decided to award the agency his Golden Fleece. Learning of Proxmire's proposed action, the head of the government agency cancelled the contract!

But Putoff and Targ had already proved to their own satisfaction that Remote Viewing can give one a vision of the past and the future -- as well as the present -- the location of Russian submarines, for instance. So they sequestered themselves in a California mountain hideaway, computerized their data and selected the Silver Futures market as a pragmatic test of their system -- and cleaned up a million dollars in a week!

This is a brief summary of the story told by Bob Beck at the February meeting of Vince Wiberg's dowers' group at Plummer's Park in Hollywood, and relayed to your editor by Ed Skilling. Furthermore, Beck says, the man who puts on the Spoon-bending parties, Jack Houck, is involved in Remote Viewing of market trends with the other two, and they have put their program on a Floppy Disc for computer use.

Wait, there's more! Beck said that Targ was invited to participate in a gathering of psychotronics experts in Russia. While there one of the Soviet physicists boasted that they had succeeded in filtering out of the "noise" coming out of the brain of the successful Remote Viewer -- galvanic skin response -- the brain rate. It is 2,000 cycles per second, not an ELF wave. So we got out our Olson Radio Store audio signal generator (\$29.95 in 1968!), and set it at 2,000 Hertz, next to our piano. That note is three octaves above Middle C, but closer to B.

THE NEW BIBLE, OAHSPÉ, ON REMOTE VIEWING

Yes, there is a chapter in Oahspe, "The Book Of Cosmogony and Prophecy", which gives instructions and illustrations on picking up the cycles and rhythms of life. If the would-be prophet sees truly, he or she can then predict accurately the course of that rhythm or cycle and Putoff and Targ have apparently uncovered the basic secret.

The unnamed writer of Oahspe -- John Newbrough -- was only the channel -- tells the reader that the would-be prophet "must find the cause of causes. . . The prophets of old divided time into cycles of three thousand years, with slight variations. And they found that at such periods of time, some certain impulse came upon the

faith		dawn of dan
50 arbitration		mira 100
680 worship		plenty
90 learning		plenty
change		C'ta 126
700 worship		famines
1000 peace		a'ji 20
200 learning		dawn of dan
change		a'ji 36
faith		a'ji 30
66 war		dawn of dan
408 destruction		foos 66
change		plagues
faith		haas 365
change		dawn of dan
480 learning		ni 88
anarchy		anos 74
faith		epidemics
arbitration		dawn of dan
change		
644 worship		
faith		

people, causing them to try to be better and wiser. Even as the same feeling is this day manifesting itself in many nations. . . There are positive and negative forces forever going to and escaping from the earth. Without these no creature could live on earth. The negative imparteth to man his corporeal growth, and corporeal desires, passions, and so on.

"That man may begin to comprehend these things, and learn to classify them so as to rise in wisdom and virtue, and thus overcome these epidemic seasons of cycles, these revelations are chiefly made.

THE ORGANIZED AND RHYTHMIC HEAVENS

"It is an error to say that while the corporeal worlds are organized, with fixed orbits and uses, the unseen worlds are nothing or at best unorganized. They are organized, with orbits, places, forms, figures and so on, as definitely as are the corporeal worlds. Their times and seasons are regular and well provided.

"In the passage of the earth in its own roadway, it goeth amongst these etherean and atmospherean worlds regularly; so that the periods inspiration and periods of darkness are not hap-hazard.

"It is not the purpose of these revelations to work out prophecies, leaving nothing for man to do. But to call his attention to the unseen forces that rule on the earth, and show him the way to make the prophecies himself. . .

"Prophecy is not guesswork. Absolute rules govern at all times, and all things. A few individuals in a nation, or of a people, are a small matter. Nor must the prophet swerve one jot or tittle by the pretensions of a people. As for example: the Brahmans, the Buddhists, the Mohammedans and the Christians, all profess faith in their respective Gods and Saviors; but their professions are false. Their faith is in soldiers and standing armies, and in implements of destruction. The prophet must not, therefore, suffer himself to hearken to individual explanations. He must grade them in their entirety; whether they manifest below thirty-three, or above sixty-six, without regard to pretensions.

"When the student hath completed his tables of orachnebuahgalah, with the history of the period, and taken the measure of the grades of the different nations and peoples of the earth, he will find that he cannot only foretell the future, but he can discover the past history for an equally long period of time. And when he hath thus completed two cycles, he can find a third, and then a fourth, and so on until all the past history of the earth is delivered up to his understanding. . . " (From the Wing Anderson edition of Oahspe, 1942)

88 war		a'ji 280
66 war		plagues
change		ji'ay 999
999 war		nebula 840
faith		dawn of dan
change		rhi 744
666 war		tae 999
66 war		dawn of dan
faith		nestor 111
66 war		ji'ay 66
750 learning		a'ji 666
war		epidemics
change		hagga 99
66 war		nebula 360
10 arbitration		cere 11
change		hi'dan
99 war		dawn
88 worship		foos 333
peace		a'ji 66
faith		dawn of dan
100 order		
66 war		
16 worship		
20 arbitration		
48 peace		
faith		

PLATE 61.—ORACHNEBUAHGALAH.

LOCALIZING THE GRID LINE CROSSING POINTS

"When we met in July last year my particular interest was the material on the Earth Grid and the ELF waves. By October I had made my own version of Ed Skilling's 'L'il ELF-TENS' and have used it many times with excellent results. My project was to calculate all Earth Grid Points a la John Sinkiewicz, plus the frequencies thereof on a computer. It took me until January to get the basic version on my Commodore Pet. So far I can duplicate Sinkiewicz's coordinates with a simple Right Ascension routine borrowed from my Astrólogy studies. These can then be rotated through a Cartesian coordinate routine to allow for pyramid location, and get back degrees of longitude and latitude.

"I am still aiming for a computer printout of the information, but there would only be a need if I intend to market the program. The next step would be to generate tables of fixed points on the globe for anybody interested in Grid research. My program is in Commodore Basic and can be rewritten to any machine using Basic. I understand you have knowledge of a new book on Grid lines by Capt. Bruce Cathie. Please let me have the details so I can get a copy. Enclosed is a check for subscription and catalog."

B.C., Sun Valley, California

CATHIE BELIEVES WE HAVE MANNED BASES ON THE MOON

"Thanks for your interest in my research and for spreading information about me and my publications in your magazine. The opposition is trying hard but they have not closed me up yet. My discoveries are continuing and have almost enough material for another book. I have approached one of the largest world-wide paperback book companies to see if they have any interest in this new information. If not my wife and I will have to go it alone once again.

"In answer to your query about the bases on the moon. Evidence I have gathered so far indicates to me that America, Russia, the British and possibly France have already established manned bases on the moon. If the information I have published in my latest book, 'The Bridge to Infinity', can be proven correct, then it stands to reason that the scientific community of the larger nations is well ahead of me, many years in fact. This means that the rocket programs have been obsolete for many years also, and that a new, secret research has taken over.

"Anti-gravity machines are now a fact and I believe that our people are using these machines to set up a secret research program and laboratories on the moon. I call these man-made UFO-type vehicles Model-T UFOs. Our first steps in space. The Philadelphia Experiment was the start of all this. See the evidence in my latest book.

"Do you really believe that America, after getting to the moon, would suddenly stop the program and let the Russians win the race by default? No way! I am 99% sure of this by adding up all the mathematical evidence I have so far. When I get 100% concrete proof you

will be one of the first to know. We have also had word of activity in the Antarctic but are not sure yet of the reliability of the source. I am most interested to see your comments on 'Bridge to Infinity' and to see your articles on the Power Grid."

Bruce Cathie, Quark Enterprises Ltd.
158 Shaw Road, Oratia, Auckland,
New Zealand, phone 818-4291

Cathie's "Bridge To Infinity" is a full-sized hardcover book, \$19.95 plus \$2.40 surface postage or \$7.00 airmail. It's a good combination of borderland information from all over the world, technical analysis and discussion with plenty of math, and illustrations.

As for the probability or possibility of manned bases on the Moon. This is a contradiction of the first principle of the "Powers, Thrones and Principalities" that dominate this planet, to keep mankind imprisoned on the earth! So, if the governments named by Cathie do have manned bases on the Moon the implications are sinister; it could only be with the connivance of the Lunar Mafia and all that festering evil stands for in our consciousness. The last word we had from the Guardians on this was that man-made Flying Saucers are still not capable of cis-lunar flight. When we leave the confines of the earth we come under Solar System Law, not Earth Law; and when the flight of Apollo 12 was aborted the power of the Guardians was well illustrated. Apollo 12 was forced to circle the Moon and bring its cargo of nuclear material back to earth; nor do They want the cash register and the confessional brought to the Moon! The Cash-Landrum UFO case and the resulting suit against the government are a significant indication of the limitations of our man-made UFOs.

POWER WITHOUT RESPONSIBILITY, AGAIN, BY THE AIR FORCE

Mr. Peter A. Gersten
Gagliardi, Tonès and Gersten
27 North Broadway
Tarrytown, NY 10591

Re: Appeal of Personal Injury Claims of Betty Cash, Vicki Landrum and Colby Landrum

Dear Mr. Gersten:

The appeals of your client's claims for personal injuries allegedly caused by an overflight of an unidentified flying object and unidentified helicopters on 29 December 1980 have been considered under 10 U.S.C. 2733 and are denied.

The reason for this decision is that the facts as alleged by the claimants fail to establish that their injuries were caused in any way by the United States Government or any of its agencies or instrumentalities. You should not consider the acceptance and subsequent denial of this claim as an admission of the truth of any facts alleged by your clients. Our investigation has revealed no evidence of involvement by any military personnel, equipment or aircraft in this

alleged incident. The arguments you presented to establish liability of the government are not supported by any case or statutory law.

This is the final administration action that can be taken on your clients' claims. This denial also satisfies the administrative filing requirements of the Federal Tort Claims Act. Based on this denial, your clients have the right to file suit against the government in an appropriate United States District Court not later than six months from the date of the mailing of this letter of denial.

Sincerely
CHARLES M. STEWARD
Colonel USAF
Director of Civil Law
Office of The Judge Advocate General

From UFO Contact Center International's "Missing Link", 9425 12th Ave. SW, Seattle, Washington, Dan & Aileen Edwards, Directors.

RADIONIC FIELD RESONANCE FOR CANCER THERAPY

"Get a copy of 'Healing', Vol. 2, No. 1, 1982, \$2 from the Gerson Institute, PO Box 430, Bonita, CA 92002. It has an article with photos and diagrams on the Field Focusing Nuclear Magnetic Resonance Machine that analyzes the body by magnetism. It detects very small cancers. It quickly shows any treatment results and numerical deviation of tissue from normal. Also there is an article on Cellular Biology that will undermine pharmaceutical giants and invalidate the work of some Nobel prize winner. Plus an exposure of the '60 Minute' TV show that ridiculed the Gerson treatment and other proven cancer therapies, with lies. They included a Seattle coroner who saw the Gerson book on the bedside table of a dead person and, without even examining the body or learning the past history of the deceased, put down on the Death Certificate that the person died of 'coffee enemas' -- an important part of Gerson cancer therapy. Yet the Merck Manual of the American Medical Association authorizes coffee enemas! When the family had an autopsy performed, which revealed that the person did indeed die of cancer, the Coroner refused to change the death certificate!"

Albert Fry, Bloomington, California

COMES THE DAWN ON LTCOL WENDELLE STEVENS

"Let me say that I was associated with Wendelle Stevens as co-author of the book 'Contact From Reticulum', detailing my own UFO experience/contact incident. . . The very nature of the action against Stevens indicates a sad and tragic destruction of his credibility and credentiality -- a self-destructive one at that. Col. Stevens sacrificed his research affiliations by getting arrested, and in fact indulging in sexual perversions. However, Stevens needs qualified Mental Health counseling, not scathing condemnation from those he knew, or knew him.

"But, more realistically, Stevens is guilty of misrepresentation of UFO cases, gross exploitation of UFO case histories -- mine included -- and attempting to factualize the most elaborate hoax in

UFO research -- the Swiss case of Billy Meir. That case will go down in UFO research as the best 'special effects' since Steven Spielberg filmed 'Close Encounters of the Third Kind'.

"I worked closely with Stevens for well over five years of my life. I thought he was up front with me totally. I thought he was trustworthy. I thought that my UFO research relationship was on the up and up. Now I learn that APRO never gave him consent to take over my case, and that Jim Lorenzen never said, 'Work with Herrmann exclusively.' Now I learn that there are improprieties in regards to the percentages on the book venture. Now I learn that he was not arrested for a UFO research case, but was arrested, tried and convicted on child molestation charges and Kiddie Porn allegations. I was lied to in three letters since his arrest. He told me it was a frameup and that he was arrested because he got too close to the truth on a UFO case. Imagine my surprise when, in seeking to get bail for his arrest on the UFO case, I found out the truth!

"I have therefore severed and completely cut off my research relationship with him and have turned my case data over to APRO and aspects of the data to Harry Lebelson of Florida. In my association with Stevens I turned down research opportunities with many UFOlogists. Perhaps many of them are on your mailing list for 'Saucer Smear'. If they want to reaffirm research on my case, they can contact Harry Lebelson or APRO. Thank you for allowing me this chance to reaffirm my own feelings in regard to one of the saddest incidents in UFO research history. I wasted five years of my life. Maybe I shouldn't have said a word about my UFO experience to anyone."

The above is from James Moseley's "Saucer Smear" Non-Scheduled Newsletter of Oct. 10, 1983. PO Box 163, Fort Lee, NJ 07024. Jim reminds his readers: "One point of order concerning the above. Wendelle Stevens did not stand trial (in Tucson, Arizona) but entered a plea-bargaining agreement instead. Herrmann can be reached at 5045 Ozark St., Lot 1, North Charleston, South Carolina 29418."

WORLD VIEW 1984: GLOBAL ASSESSMENT OF PROBLEMS AND OPPORTUNITIES

We have an invitation to attend the Fifth General Assembly and Exposition of the WORLD FUTURE SOCIETY in Washington D.C., June 10 - 14, 1984 at the Hilton, and to make a presentation on the Reality of Flying Saucers in the "Space and Other Frontiers" panel. This is a good opportunity to share ideas with forward-looking people who are already turning their attention from the ineptitude of the Piscean Age and are planning and working toward the promise of the Aquarian Age. New pressures are upon us as the Earth and the Solar system move forward through space, into new regions, at the dizzying speed of 1,000 miles per second!

Kenneth W. Hunter is the general chairman of the Assembly and Exposition. Write to him for details at the World Future Society, 4916 St. Elmo Ave., Bethesda, Maryland 20814, phone 301-656-8274. Attendance at the Assembly is expected to above four thousand.

SPACE AGE SEMINAR IN DAVENPORT, IOWA, JUNE 9th & 10th

Associate Warren Williams, II, 3019 W 72nd St., Apt. 1, Davenport, Iowa 52806 is arranging a Space Age seminar on Psychotronics, Psychokinetics, Flying Saucers, etc., and has your Editor, Uri Geller, Dr. Galen Hieronymous, Gary Fleck, Dr. Leo Sprinkle lined up for speakers. There will be others, of course. Write to Mr. Williams for details.

U.S. PSYCHOTRONICS ASSOCIATION CONFERENCE, JUNE 27th thru JULY 1st

The 1984 Conference is to be held in Atlanta, Georgia this year on the campus of Oglethorpe University. How Psychotronics (Radionics) has come to the fore since Gallimore organized the first conference in the 1970s. Not only has it become respectable but it is now a tactical weapon in the arsenal of Democracy! So, if you want more info on the cutting edge of borderland research, join the "gathering of the faithful" in Atlanta in June. Write to Sec'y-Treas Robert Beutlich, 3459 Montrose Ave., Chicago, Illinois 60618 for details, or to Peter J. Kelly, PO Box 167, Lakemont, Georgia 30552.

WEST COAST DOWSERS 1984 CONFERENCE, SANTA CRUZ, JULY 7th thru 11th

Mary Lee Satterlee, President, San Jose Chapter, American Society of Dowsers, informs us that this year's meet will be in the Porter College section of the campus of the University of California at Santa Cruz again, a most charming and appropriate setting to study locating water, oil, gas, minerals, treasure, missing persons, lost objects and ancient civilizations and the use of dowsing, color and crystals in holistic health applications. There will be classes in map dowsing, information dowsing at well site (field dowsing) remote viewing, use of instruments: bobber, Y-rod, L-rod, pendulum, and dowsing without instruments. We've offered to give a class on Psychic Self-Defense for those who have attracted the malevolent attention of Earthbounds in their attempts to pierce the Veil, and dont know how to drive the spooks off and keep them off. For details on this symposium on the practical applications of borderland science, Satterlee's address: 6062 Montgomery Bend, San Jose, Calif. 95135, (408) 238-1188.

The JOURNAL of
Borderland Research

Bulk Rate
U.S. POSTAGE
PAID
Vista, Calif.
Permit No. 42

A Publication of:
Borderland Sciences
Research Foundation
PO Box 549, Vista,
California USA
92083-0190